

TEACH

Week of April 12, 2021

# FRANK FOWLER DOW

School 52's Newsletter for Parents

Be Smart, Be Brave, Be Kind, Be YOU!



Dr. Mary J. Ferguson  
Principal  
Mary.Ferguson@rcsdk12.org

100 Farmington Road  
Rochester, New York,  
14609

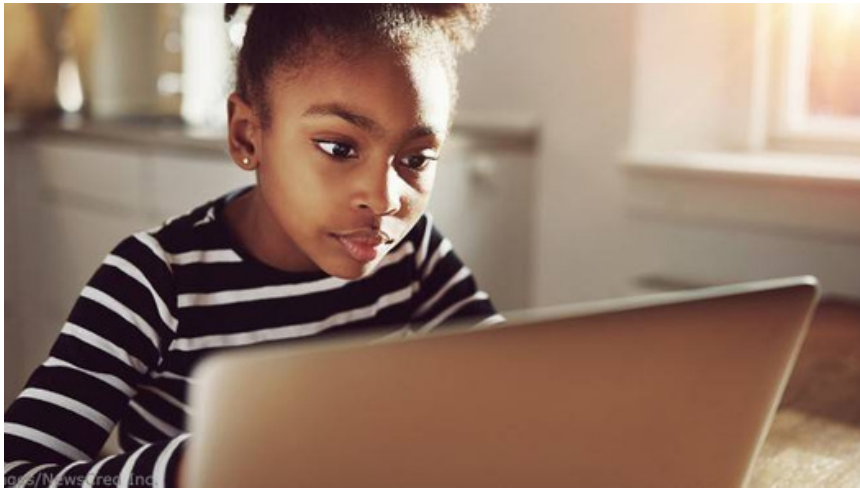
Phone (585) 482-9614  
Fax (585) 654-1079  
Start Time: 9:00am  
End Time: 3:30pm

---

## Special days in April help you promote learning all month long

April may bring showers, but it also brings great opportunities to promote responsibility and learning. Here are some activities you can plan to do with your child this month:

- **April 2:** International Children's Book Day. This day is designed to inspire a love of reading. Grab a book and spend some time reading together.
- **April 12:** National Library Workers Day. Have your child make a card to thank the school librarian for helping him or her in the library.
- **April 15:** National Laundry Day. Teach your child how to do their own laundry.
- **April 22:** Earth Day. As a family, think of something you can do to protect the earth, such as recycle.
- **April 23:** Shakespeare's birthday. With your child, act out a scene from one of Shakespeare's plays. Or, challenge your child to write his or her own play.
- **April 30:** National Honesty Day. Talk to your child about why it is important to be honest every day!



## Show your child how to evaluate information online

Your child has to write a report, and they have to do research online. Take this opportunity to teach about safe and reliable ways to do research. Here's how:

- **Prepare.** Find websites you trust, such as online encyclopedias for kids. Ask your child's teacher for a list of kid-friendly sites. You can also review the school's website to find recommended online resources
- **Supervise.** Sit at the computer with your child. Search for information together. As you pick resources, evaluate them carefully. Who is the author? What makes him or her trustworthy?
- **Discuss what makes a site** likely to be legitimate. Is it run by a trusted source? Does it end with .gov or .edu? These indicate government or educational affiliations.
- **Look at the information** on the page closely. How recently was it written or updated? Does it represent facts or opinions? Does it refer to other reputable sources?

## Parent Reminder

**This is a reminder that this marking period will end on April 16th. Report cards will be sent home on April 23rd. Also, NYS ELA testing is set to begin on April 20th.**



*Be Smart, Be Brave, Be Kind, Be You!*